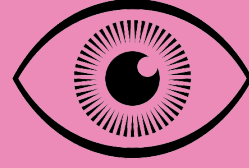


SPIRITUAL CARE AT HOME AS A TEAM: A HOW-TO

a participatory action research in two Dutch healthcare organizations

Authors: Hanna Klop, Bart Cusveller, Rianne Hoopman, Marian Werkman
 Hogeschool Viaa, Zwolle, the Netherlands; Christelijke Hogeschool Ede, Ede, the Netherlands

FACILITATING



What
 Support and vision from your organization on meaning and spirituality

- Some questions to ask**
- How can I collect and implement knowledge on meaning?
 - What options are there for developing expertise in the field of meaning?
 - What knowledge do we already have within the organization and what is needed according to experts and team?

Some methods: regular meetings with team and manager

REFLECTING

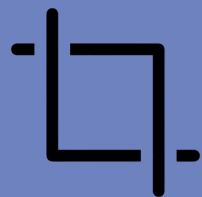


What
 Clarifying team needs and determining basic knowledge and skills in spiritual care

- Some questions to ask**
- What is our vision on meaning in care and well-being of clients?
 - To what extent do we experience shyness in discussing meaning with our clients?
 - How do we want to better recognize meaning?

Some methods: team meetings guided by spiritual counselors

DEFINING



What
 Determining what teams understands by meaning and spiritual care

- Some questions to ask**
- What do you mean by meaning?
 - How does meaning relate to the professional's own beliefs?
 - How do we pay attention to meaning as a normal part of the care process, and not as something extra?

Some methods: Brainstormsessions with the team, e.g. walks

AWARENESS



What
 Reflection on personal spirituality, spirituality as a team, seeing and using spiritual skills

- Some questions to ask**
- How do I experience meaning in my life and work?
 - What room do I have for the other person's sense of meaning and associated (moral) dilemmas?
 - To what extent am I aware of the layers of meaning and how do I recognize this?

Some methods: Discussing cases guided by a spiritual counselor

DEVELOPING



What
 Continuing to develop skills in spiritual issues

- Some questions to ask**
- How do we keep meaning alive as a skill?
 - How do we keep regular contact with the spiritual counselor?

Some methods: Spiritual counselor is present at the nearby team post

EQUIPPING THE TEAM



What
 Equipping and training the team externally or internally

- Some questions to ask**
- What would help to continue discussing meaning with clients?
 - Are there existing moments (e.g. intake) where we can better discuss meaning?

Some methods: Fixed work processes (example questions and referral)

REFERRING



What
 Work process for referral to spiritual counselor

- Some questions to ask**
- When do I refer?
 - How do I refer?
 - How do we make this process of referral transparent?

Some methods: Training by a spiritual counselor, know where to find SC

USING TOOLS



What
 Promote skills in discussing spiritual issues and conversations

- Some questions to ask**
- Which tools match our vision of meaning?
 - How are we going to use these tools and when?

Some methods: Databank for tools, consulting an expert